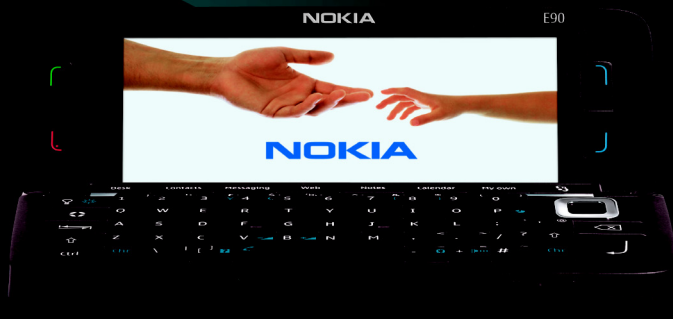


Synchronising data



Nokia E90 Communicator

NOKIA
Eseries

Nokia E90 Communicator Synchronising data

Legal Notice

Copyright © 2007 Nokia. All rights reserved.

Nokia, Nokia Connecting People, Eseries and E90 Communicator are trademarks or registered trademarks of Nokia Corporation. Other product and company names mentioned herein may be trademarks or tradenames of their respective owners.

Reproduction, transfer, distribution or storage of part or all of the contents in this document in any form without the prior written permission of Nokia is prohibited.

Nokia operates a policy of ongoing development. Nokia reserves the right to make changes and improvements to any of the products described in this document without prior notice.

To the maximum extent permitted by applicable law, under no circumstances shall Nokia or any of its licensors be responsible for any loss of data or income or any special, incidental, consequential or indirect damages howsoever caused.

The contents of this document are provided "as is". Except as required by applicable law, no warranties of any kind, either express or implied, including, but not limited to, the implied warranties of merchantability and fitness for a particular purpose, are made in relation to the accuracy, reliability or contents of this document. Nokia reserves the right to revise this document or withdraw it at any time without prior notice.

The availability of particular products and applications and services for these products may vary by region. Please check with your Nokia dealer for details, and availability of language options.

Copyright to the Windows screenshots belongs to Microsoft.

Contents

Introduction.....	4
Synchronising data using Nokia PC Suite	5
Creating and editing synchronisation profiles	9
Creating a new profile	9
Editing a synchronisation profile	10
Synchronising data using Nokia E90 Communicator	11

Introduction

The purpose of this document is to help you synchronise the Nokia E90 Communicator notes, calendar and contacts information with a compatible PC or a remote Internet server.

The application uses SyncML technology for remote synchronisation. For information on SyncML compatibility, contact the supplier of the applications with which you want to synchronise your device.

The available applications you can synchronise may vary. Contact your service provider for more information.

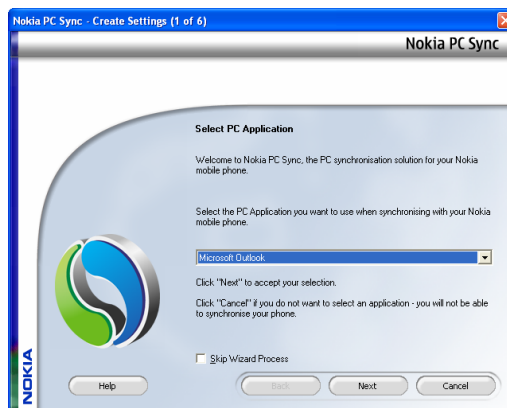
Synchronising data using Nokia PC Suite

Nokia PC Suite connectivity software for the Nokia E90 Communicator must be installed and configured first. For the latest Nokia PC Suite software, see the Nokia website www.nokia.com or www.nokiausa.com.

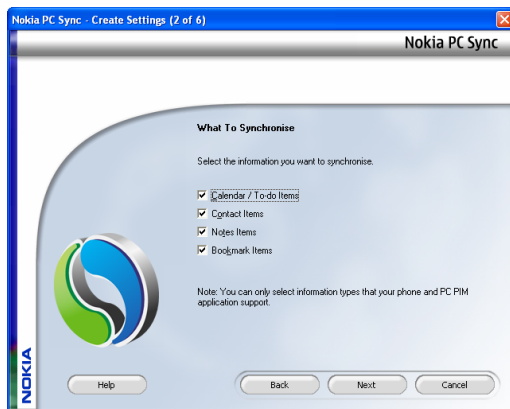
To synchronise data using Nokia PC Suite, do the following:

- 1 Connect your Nokia E90 Communicator to a PC that has Nokia PC Suite for the Nokia E90 Communicator installed.
- 2 Open **Nokia PC Suite** for the Nokia E90 Communicator on the PC and click **Synchronise**. If you do not have a synchronisation profile, **Nokia PC Sync** starts a wizard for defining the synchronisation settings. If the wizard will not start automatically, click **Settings** to create a synchronisation profile. To move forward in the wizard views, click **Next**, and to move backwards, click **Back**.

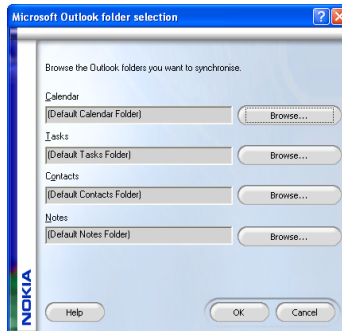
- 3 Select the PC application that you want to use to synchronise data with your Nokia E90 Communicator. Click **Next** to continue.



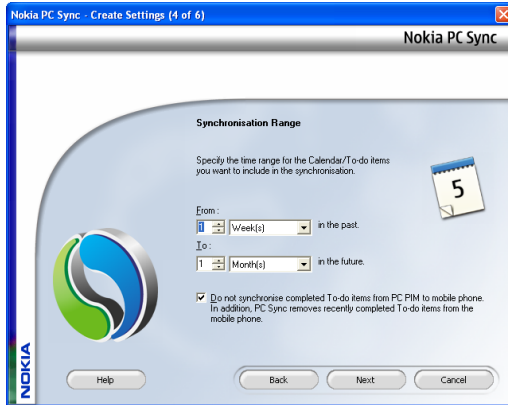
- 4 Define the data on the PC that you want to synchronise with your Nokia E90 Communicator, and click **Next** to continue. The data options depend on the PC application you selected as the data source. For the best performance, select only the data that you want to synchronise.



- 5 Select the Outlook profile to synchronise with (if you are synchronising with Microsoft Outlook). Click **Next** to continue, or if you need to browse for the Outlook folders to be used, click **Select folders**. Click **Browse** to look for a location, and **Advanced** to define additional settings.

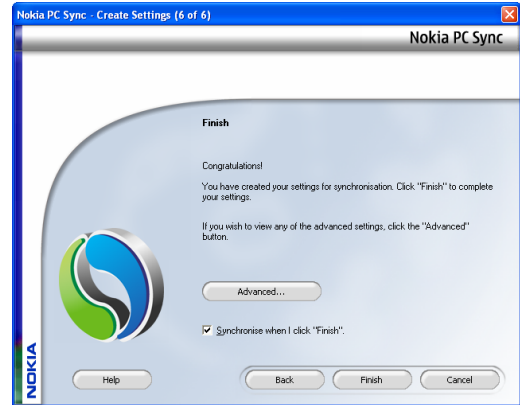


- 6 Define the time range for calendar and to-do items that you select to synchronise. Click **Next** to continue.



- 7 Select a web browser for synchronising web bookmarks. Click **Next** to continue.

- 8 Define whether you want to start the synchronisation after you click **Finish**.

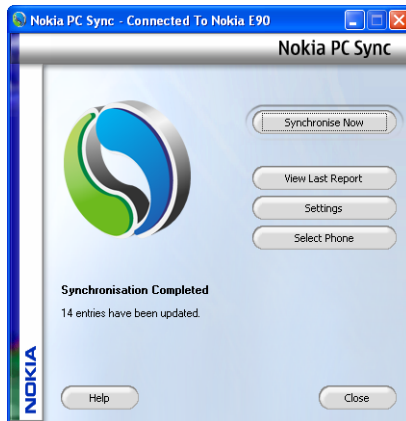


- 9 Click **Finish** to close the wizard. If you select to synchronise after clicking **Finish**, the synchronisation is started.

- 10 Click **Synchronise Now** to start the synchronisation. Note that depending on the amount of data you are synchronising, the process may take a long time.



- 11 After the synchronisation is completed, click **View Last Report** to view a report of the synchronisation, or **Close** to return to the main screen.



In the main screen, you have the following options:

- Click **View Last Report** to view a report on the last synchronisation.
- Click **Settings** to set the synchronisation settings.

To create a new PC Suite synchronisation profile, click **Settings**, then **Create new settings**, and define the synchronisation settings. Note that this replaces your current profile.

Creating and editing synchronisation profiles

Select [☰](#) > [Tools](#) > [Sync](#).



Tip: You may receive the synchronisation settings as a message from your service provider.

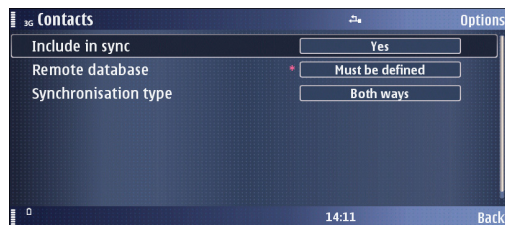
Creating a new profile

Your device has a predefined profile for PC Suite and normally you do not need to modify it.

To create a new profile to connect with another synchronisation server, do the following:

- 1 Select [Options](#) > [New sync profile](#). A profile creating wizard opens to help you define the correct settings. When the device asks if you want to copy an existing profile, select [No](#).
- 2 Enter a name for the profile in [Sync profile name](#).
- 3 Select [Applications](#), and define the following settings for each application you want to synchronise:
 - [Include in sync](#) – Select whether to synchronise the application with this synchronisation profile.
 - [Remote database](#) – Enter the path to the database with which you synchronise the application.
 - [Synchronisation type](#) – Select the direction of synchronisation. Select [Normal](#) to synchronise data from the device to remote database and back, [To phone only](#) to synchronise data from the remote

database to your device, or [To server only](#) to synchronise data from your device to the remote database.



- Press [Back](#) to return to the profile settings.
- 4 Select [Connection settings](#), and define settings for the following:
 - [Server version](#) – Select the SyncML version you can use with your server.
 - [Server ID](#) – Enter the server ID of your server. This setting is only available if you select 1.2 as the SyncML version.
 - [Data bearer](#) – Select the data bearer to connect to the remote database during synchronisation.
 - [Access point](#) – Select the access point to use for the synchronisation connection, or create a new access point. You can also choose to be asked for the access point every time you start synchronising. This

setting is only available if you select Internet as the data bearer.

- **Host address** – Enter the address of the server that contains the database with which you want to synchronise your device.
- **Port** – Enter the port number of the remote database server.
- **User name** – Enter your user name to identify your device to the server.
- **Password** – Enter your password to identify your device to the server.
- **Allow sync requests** – To allow synchronisation to start from the remote database server, select **Yes**.
- **Accept all sync reqs.** – To have your device ask for your confirmation before accepting synchronisation from the server, select **No**.
- **Network authentic.** – To authenticate your device to the network before synchronisation, select **Yes**. Enter your network user name and network password.



Press **Back** to return to the profile settings.

- 5 Press **Back** to finish creating the profile and save the settings.

Editing a synchronisation profile


Your Nokia E90 Communicator contains a profile for Nokia PC Suite, and the basic setup is done with Nokia PC Suite. You need to edit these predefined settings only if the settings have been changed. For detailed information, see the User's Guide for Nokia PC Suite or the help for Nokia PC Sync. Note that some PC Suite profile settings are read-only.

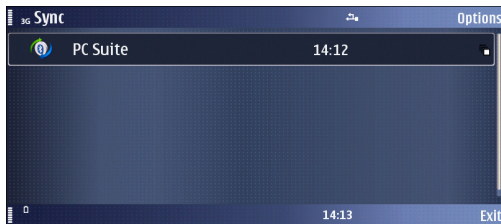
To edit a synchronisation profile, select the profile you want to edit and select **Options > Edit sync profile**.

The profile settings are described under "Creating a new profile".

To delete a profile, select the profile you want to delete and select **Options > Delete**.

Synchronising data using Nokia E90 Communicator

Select  > *Tools* > *Sync*.



To synchronise data using the Nokia E90 Communicator, do the following:

- 1 Create and/or edit a synchronisation profile to fit your needs. Note that if you are using the PC Suite profile, you do not need to edit it to start data synchronisation. See "Editing a synchronisation profile" on page 10.
- 2 Connect your device to a compatible PC. You can use a Bluetooth, an infrared, or a data cable connection. If you are using a data cable, confirm that the *PC Suite* mode is selected.
- 3 Start the synchronisation from the compatible PC.

After you have synchronised your device with a computer, you can view the synchronisation log. To open the synchronisation log, select a profile and press *Options* > *View log*. The log shows, for example, the date and time of the transfer.